

## **WELLNESS CENTER & SPA I Monasteri Golf Resort**

Interior design Project: **Simone Micheli laboratory**

Distribution and functional layout, engineering and construction: **Mioblu Special Wellness**

Location: **I Monasteri - Golf Resort, Siracusa**

Client: **Gruppo Bulgarella**

Smq: **300**

Planning: **2011**

Achievement: **2011-2012**

Photo: **Massimiliano Marras**

lighting: **GLIP "The Lighting Partner"** | [www.glip.it](http://www.glip.it)

floors and wall coverings: **Del Conca** | [www.delconca.com](http://www.delconca.com)

sanitary: **Simas** | [www.simas.it](http://www.simas.it)

A new spa project with the interior design of Simone Micheli Laboratory with Mioblu Special Wellness (see previous achievements: Hotel Incontro di Ariano Irpino, Le Terrazze di Treviso, Relais & Château Duchessa Isabella di Ferrara)

The SPA at the Gold Resort I Monasteri, near Siracusa, perfectly expresses the architect Simone Micheli's vision, and at the same time it integrates with the resort's philosophy and with Sicily's insular environment. The wellness center is divided into different areas, each one with a different function, and every one similarly capable of transporting the guest to a different, other world, suspended in time and space, perfect to enable psychophysical relaxation through pleasant and plurisensory experiences. Starting from the reception area one can perceive the tone of the SPA. The walls, the desk, and a willowy pilaster, all white and with soft lines, are accented with calming blue lights. The main swimming pool, equipped with sceographic and therapeutic water jets, and next to a relax area furnished with white beds with organic lines, offers relief and relax in an environment with diffuse lights and stone walls with warm tones. Three cabins equipped for personalized wellness treatments and the salt room, where one can take advantage of all the benefits which mineral salts offer, are adjacent to an more ample space where we find an elevate pool with an unusual shape and more welcoming and ergonomic white beds. The eclectic lighting, characterized by the compenetration of different lights, creates a welcoming and multisensory atmosphere. A light from spotlights, located on the ceiling and at the bottom of the pool meets one coming from sources around the perimeter of the celing and the one coming from colored LEDs in the ceiling, arranged to create curvy shapes, which spread out and recall an arboreal natural world. The resulting atmosphere, obtained by the combination of various types of illumination with white smooth, curvy surfaces fully facilitates physical regeneration and mental respite. Similarly the near path made up of a sauna, a hot-dry environment and of a hammam, hot-humid environment, enriched with luxurious aromas, along with colored lighting effects, allows the guest to reach total wellness, enveloping him and bringing him to another dimension. This location of sensorial pleasure produces experiences that will become enjoyable memories. Intriguing spaces and specific treatments, from hydrotherapy to regenerating massages allow for one's riappropriation outside the world. Contents which go beyond the concreteness of everyday life elevate spirit and body and foster the objective of a new harmony. Refined essentialism and osmotic fluidity of the wellness environment, which unites different functional spheres with fascinating aesthetics create an unforgettable oasis of peace and serenity.



01ed



03ed



06ed



10ed



11ed



12ed



14ed



16ed



19ed



26ed



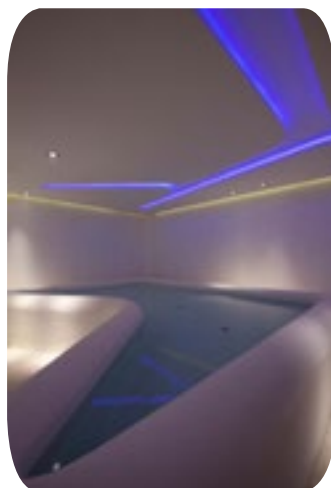
53ed



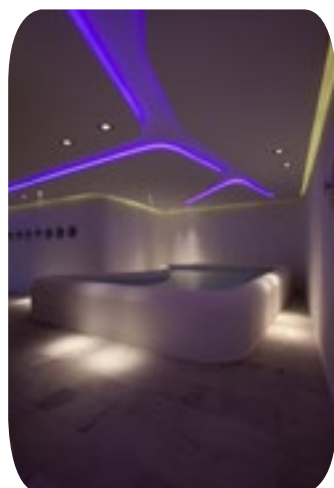
39ed



30ed



42ed



45ed



50ed

**For more information about this release or to request high-resolution photography, please contact:**

**Press Office simone micheli architectural hero** | [www.simonemicheli.com](http://www.simonemicheli.com)

Milano | [press@simonemicheli.com](mailto:press@simonemicheli.com) | \*39 02 26414735

Firenze | [staff47@simonemicheli.com](mailto:staff47@simonemicheli.com) | +39 055 691216

## Simone Micheli Architetto

Simone Micheli was born in Tuscany, Viareggio (Lucca) in 1964. In 1990 he founded the architectural studio of the same name and in 2003 the company Simone Micheli Architectural Hero based in Florence, Milan and Dubai. Professor at the Poli.Design and the Scuola Politecnica di Design in Milan. He works as editor of the theme exhibition named "contract" as well of the major international exhibitions in this field.

His professional activity moves in different directions from architecture to interior design, from design to visual design going through mass-media and social media; his creations, ecofriendly and oriented to nature, are defined by a strong identity and uniqueness. Many accomplishments for public governments and major private commissions related to the world of residential and community, make it a major player in the European dimension of the project.

Here follow some of the awards he recently received of the International Design Award 2008 – Los Angeles as "Interior Designer of the Year"; "Best of Year 2010" Spa Category – Interior Design Magazine, New York with Atomic Spa Suisse; Annual Club Space Award 2010\_Modern Decoration International Media Prize – China with Atomic Spa Suisse; "TrE number one award 2011"- Venice for interior design and "Contemporary Spa Award 2011" in the "Best Future Spa" category - Bologna with "Marina Verde Wellness Resort" project - Caorle, Venice; "Best of Year honoree 2012" Hospitality Category – Interior Design Magazine, New York, with B4 Hotel Milan.

His works have been presented in the most important exhibitions and has lectured at international cultural institutes, organizations and institutions of various cities around the world. Many are publications of his projects on Italian and international magazines, TV - interview dedicated to his projects and monographs, the last one "Simone Micheli From the Future to the Past", edited in 2012, represents his 20 years architectural making selection. [www.simonemicheli.com](http://www.simonemicheli.com)

SIMONE MICHELI ARCHITECTURAL HERO | Firenze | Milano | Dubai

[simone@simonemicheli.com](mailto:simone@simonemicheli.com) [www.simonemicheli.com](http://www.simonemicheli.com)



foto by maurizio marcato